

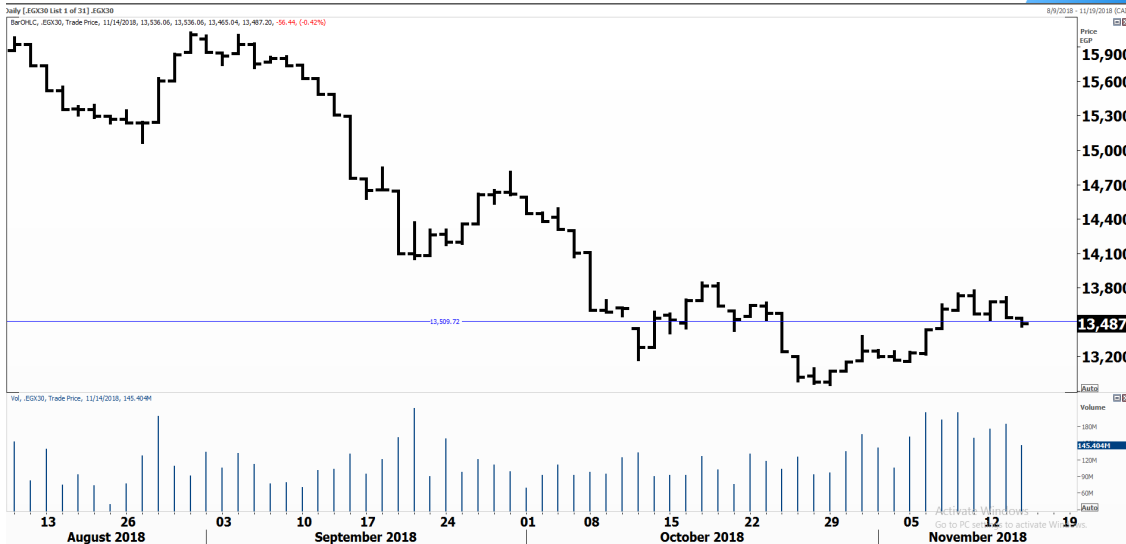


PIONEERSECURITIES

# TECH TO THE POINT

15-Nov-18

This report must be read with the disclaimer  
on the last page



Last	13,487.20
High Today	13,536.06
Low Today	13,465.04
Volume	M 145.404
First Support	13,500.00
Second Support	13,300.00
First Resistance	13,800.00
Second Resistance	14,100.00
Stop Loss	
HISTORICAL RETURN %	
1 WEEK	-0.94%
1 MONTH	-0.25%
1 QUARTER	-12.18%
1 YEAR	-4.57%
YTD	-10.20%

## Analysis

The break below 13,510 should lead the EGX 30 index to 13,300; it is not necessary that the index reaches this level, as buying power is still there, especially that it appeared at the end of the session in many stocks like GTHE, which took the market a bit to the north.

As we mentioned before, there is a significant divergence in the performance of different stocks so applying care in choosing which stocks to invest in is very important. It is obvious that even when the EGX 30 index breaks 13,800 upwards (which is expected to occur soon) not all stocks will rise together.

For now, we are waiting for the 13,300 level to be hit. If the index rebounds before this level is hit, breaking 13,800 will be our buy signal.

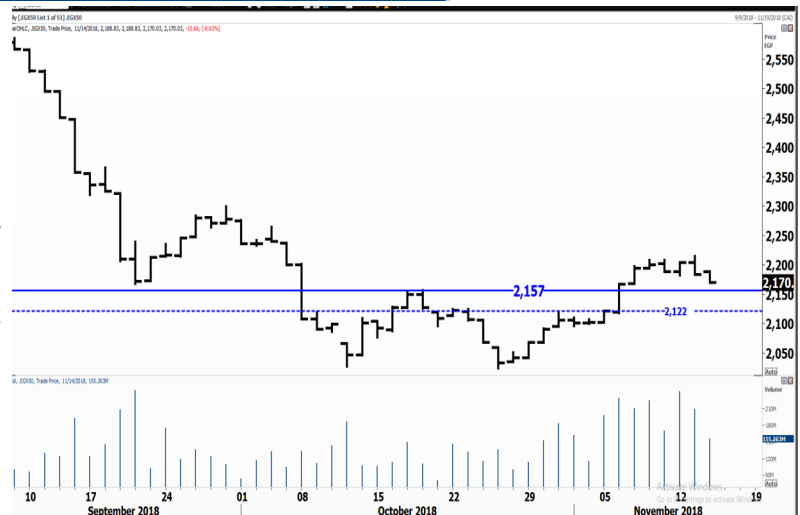
## Egyptian Exchange Equal Weights Index EGX50

### Analysis

The reason behind that the EGX 30 can rebound before reaching its 13,300 level lies in the EGX 50; in other words, this index is approaching its support that lies at 2,157 (the breakout level).

Thus, a test of this support should lead to a renewed rebound. If this occurs, both the 50 and the 30 indices will rebound.

Thus, keeping an eye on the EGX 50 is also important as it might give us an early buy signal.




## Resistance

## Support


**PIOH**  Broke below 6.5, closing at 6.34 at the end of the session. If the decline continues, we expect the 5.95-6 area to halt it. In other words, we expect PIOH to rebound once again as it approaches 6.


## Testing

## Support

**KABO**  The stock's support lies at 1.25; those who hold positions are recommended to place their stop below this level. We do not recommend entering though until a clear rebound occurs. For now, the probability of a break below support is not low.

## Resistance

**CCAP**  The stock is challenging its 4.05 – 4.10 resistance area and expected to break to the upside. Our target still lies at 5, but we believe that CCAP should reach higher levels from an intermediate-term perspective.

**IRON**  Broke 5.3 upwards during the session but closed slightly below it in the end; at 5.28. Yesterday's volume was high, which tells us that breaking 5.3 upwards will probably happen very soon, if not today. We are bullish on IRON and our target lies at around 6.25-6.5.

Symbol	S. Description	Last	Support 1	Support 2	Resistance 1	Resistance 2	Trend	Recommendation	Stop Loss/ Re-Entry
COMI.CA	COM INTL BK	80.60	78.00	73.00	84.00	86.25	↔	Hold	78.00
EAST.CA	EASTERN CO	17.00	15.20	14.60	17.50	18.70	↔	Hold	17.50
SWDY.CA	ELSWEDY ELECTRIC	16.51	16.00	14.80	17.33	18.00	↔	Hold	14.80
TMGH.CA	TALAT MOSTAFA	9.60	9.10	8.80	10.50	11.40	↓	P.SELL	10.50
ABUK.CA	ABU QIR FRT&CHM	27.47	27.00	25.50	29.00	31.50	↓	P.SELL	31.50
EKHO.CA	EGYPT KUWAIT HLD	1.10	\$1.10 *	\$1.08	\$1.15	\$1.17	↔	Hold	\$1.08
HRHO.CA	EFG HERMES HOLD	13.62	13.85*	13.20	14.84	15.70	↓	P.SELL	14.84
GTHE.CA	GLOBAL TELECO	3.47	3.26	3.00	3.70	4.07	↔	Hold	3.00
AMOC.CA	ALX MINERAL OILS	6.90	6.80	6.25	7.50	8.00	↓	P.SELL	7.50
MNHD.CA	MEDINET NASR HOU	7.20	7.00	6.50	7.75	8.40	↔	Hold	7.00
SKPC.CA	SIDI KERIR PETRC	18.65	18.22	16.00	20.60	22.75	↓	P.SELL	20.60
OCDI.CA	6TH OCT DEV INV	15.88	14.75	13.00	17.20	17.90	↓	P.SELL	17.20
JUFO.CA	JUHAYNA FOOD IND	10.26	9.00	8.70	10.85	11.50	↓	P.SELL	10.85
ESRS.CA	EZZ STEEL	18.21	17.25	16.00	20.10	20.95	↓	P.SELL	20.95
ETEL.CA	TELECOM EGYPT	10.96	10.25	9.55	11.20	11.90	↓	P.SELL	11.90
CCAP.CA	CITADEL CAPITAL	4.03	3.80	3.50	4.03*	4.20	↔	Hold	3.50
QNBA.CA	QNB ALAHLI	43.00	40.00	38.00	46.00	50.00	↓	P.SELL	50.00
PHDC.CA	PALM HILL DEV CO	2.37	2.30	2.06	2.55	2.90	↔	Hold	2.55
ORAS.CA	ORASCOM CONST	111.50	110.00	108.00	122.00	131.00	↔	Hold	122.00
HELI.CA	Misr Gedida Hou	18.46	17.30	16.00	19.90	21.95	↓	P.SELL	19.90
EFID.CA	EDITA FOOD INDS	14.50	13.00	12.20	14.50 *	16.00	↓	P.SELL	17.00
ISPH.CA	IBNSINA PHARMA	9.95	9.40	8.60	10.23	10.80	↔	Hold	8.60
EMFD.CA	EMAAR MISR DEV	3.20	3.08	2.90	3.45	3.70	↓	P.SELL	3.45
PIOH.CA	PIONEERS HLDG	6.34	6.00	5.75	7.15	8.00	↔	Hold	5.75
OIH.CA	ORASCOM INVESTMENT HOLDING	0.56	0.51	0.45	0.62	0.64	↔	Hold	0.51
EGAL.CA	EGYPT ALUMINIUM	34.51	32.50	31.00	36.00	38.00	↔	Hold	31.00
EGTS.CA	EGYPTIAN RESORTS	2.15	2.11	2.03	2.32	2.50	↑	Hold	2.03
PORT.CA	PORTO GROUP	0.75	0.71	0.60	0.77	0.85	↓	P.SELL	0.85
IRON.CA	EGYPTIAN IR & ST	5.28	4.80	4.50	5.30	5.90	↔	Hold	5.30
ACGC.CA	ARAB COTTON GIN.	1.87	1.65	1.50	1.99	2.07	↓	P.SELL	2.07

## Guidelines



**Bullish**



**Bearish**



**Neutral**

Trend: (Upgrade, Downgrade): Change in trend color refers to upgrade or downgrade in the trend relative to the previous trend direction.  
E.g. change from "↓ Down" to "↔ Flat" is considered an upgrade and vice versa.

Buy: Buy the full position.

P.Buy: Buy portion of a position

Hold: Don't Buy or sell.

P.SELL: Sell portion of a position.

Sell: Sell the full position.

Stop Loss: Completely exit the position (or) Re-entry in cases of Selling.

## Disclaimer

This report has been prepared according to the general data available for public, in accordance with the professional standards applied in that career to the best knowledge of the reporter. The recommendations mentioned are a guiding tool representing a professional opinion, and not granting any profits, consequently it is not obligatory for our valued customers and investors. Pioneers Securities©, Egypt shall not be liable for any direct, indirect, incidental, or consequential damages, including limitation losses, lost revenues, or lost profits that may result from these materials. Republishing this report or any of its contents is subject to prior approval; referring to the source is a must. Opinions expressed are subject to change without notice and may differ or be contrary to the opinions or recommendations of Pioneers Securities©, Egypt Research or the opinions expressed by other business areas or groups of Pioneers Securities©, Egypt as a result of depending solely on the historical technical behavior (price and volume).

## Technical Analysis Department

### Saleh Nasser

Chief Technical Strategist

### Ahmed Hassan

Senior Technical Analyst

### Dina Fahmy

Senior Technical Analyst

### Tips on reading the report

The first page includes an analysis of two major indices in the Egyptian Stock Market; the norm is that we will analyze both the EGX 30 and 70, but sometimes we will compare the EGX 30 to its 50 counterpart if there is important information in this comparison. We also use the Hermes Last Index interchangeably with the EGX 30. The .HRMSL index has an important edge; it uses last prices instead of VWAP. First thing our clients should do is to read the indices analysis carefully to have a clear understanding on our overall view.

The second page includes stocks that broke out beyond their resistance levels, and those that violated their support levels. It also includes stocks that are testing their support levels and those that are testing their resistance. This analysis is important and it is the core of our recommendations. It is important to note though that not all stocks that are testing their support levels are bullish, and not all that are testing their resistance levels are bearish. To make it easier for our clients, we have placed a bull face 🐂 if we consider the stock under study bullish, and a bear face 🐻 if we consider it bearish. We also added a big bullet 🍒 if we are neutral.

It is important to note that you might find a stock that we consider bullish in our analysis (in the breakouts/testing section) but it remains as a hold or partial sell in the table. The conflict here is that the table is more conservative. This will not be an issue with our clients, because our analysis will explain why we are being bullish/bearish on the stock.